

What are GlanArray™ Slides?

Glantreo's, patent-pending, coated microscopy slides are engineered to improve cellular adhesion and enhance image quality

Our proprietary nano-coating ensures better attachment of poorly adherent cell lines compared to both bare glass and conventional coatings such as poly-L-lysine; additionally, the GlanArray™ format allows for multiple replicates per slide, and the specialised coating results in reduced background staining. For the user this means higher quality images containing greater numbers of cells prepared using a lot less consumables and a much more rapid workflow.

Better Imaging

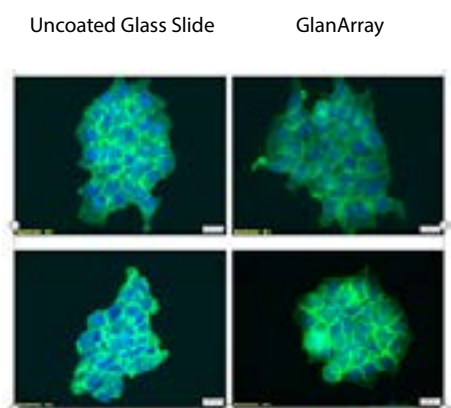


Figure 1

Figure 1 illustrates the clarity of imaging after culturing of cells on GlanArray™. Improved resolution can be seen in the GlanArray™ samples compared to the uncoated glass slide.

Better Adhesion

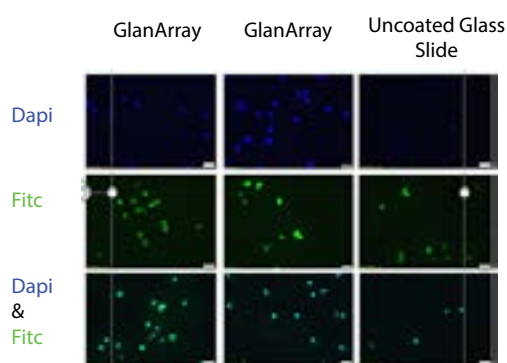


Figure 2

Figure 2 illustrates the cell line HTC -116 (a human colon cancer cell line) cultured and stained on the GlanArray™ and standard glass microscope slides. An increased amount of viable (approx. 50%) cells are noted on the GlanArray™ coated slides.

Formats Available

Standard 8 Well Multi Well

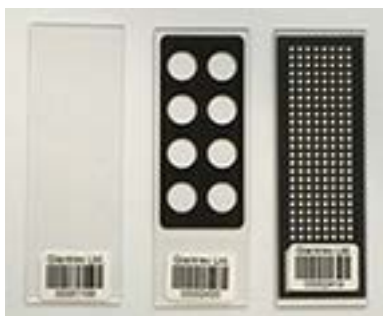


Figure 3

Figure 3 shows some of the available multi-well formats of GlanArray. Depending on your experimental design we can customise the size and dimensions of the coating 'wells'. Barcode and non barcode options are available. Multiplexing not only allows for a lower volume of reagents to be used, thereby reducing expensive consumable costs, but can also facilitate the more rapid and simultaneous processing of samples, increasing productivity and reducing inter-replicate variability.

Please contact for more details, including samples for evaluation.

Glantreo Limited

ERI Building, Lee Road,
Cork, Ireland.

Contact: John Hogan/Dr. John Hanrahan
+353 86 8643079 / +353 87 9842153
j.hogan@glantreo.com / j.hanrahan@glantreo.com