



HEMP/CBD Product Analysis

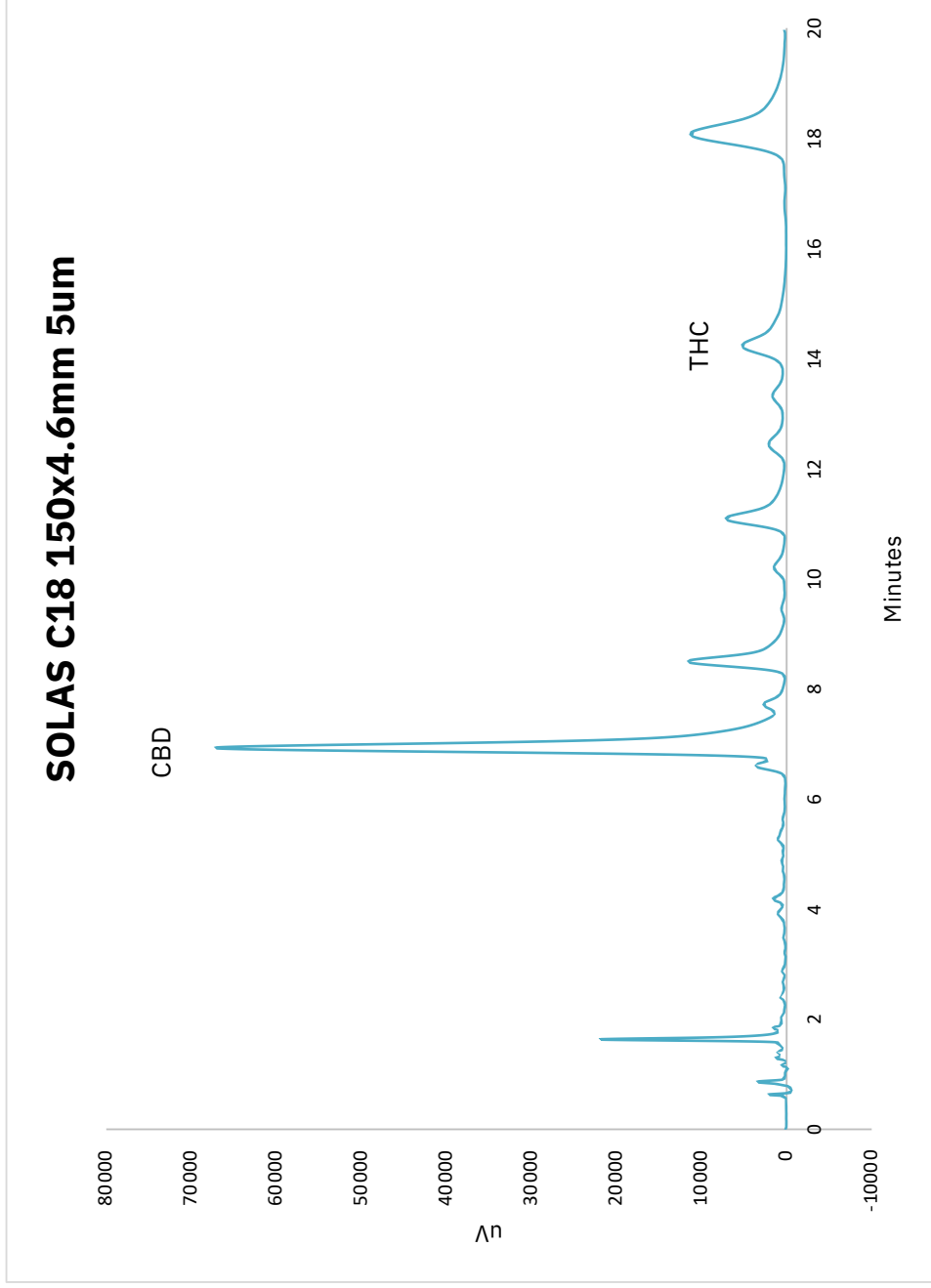
Table of Contents

| | Appendix | Page |
|--|----------|---------|
| HEMP Analysis | B | B1 - B5 |
| Applications | | B2 - B5 |
| Crude HEMP/CBD Oil Analysis with SOLAS 5um C18 | | B2 |
| CBD Tinture Analysis with SOLAS 5um C18 | | B3 |
| CBD Herbel Supplment Analysis with SOLAS 5um C18 | | B4 |
| CBD HDIstillate Analysis with SOLAS 5um C18 | | B5 |

Applications - Raw Hemp oil Analysis

Chromatographic conditions:

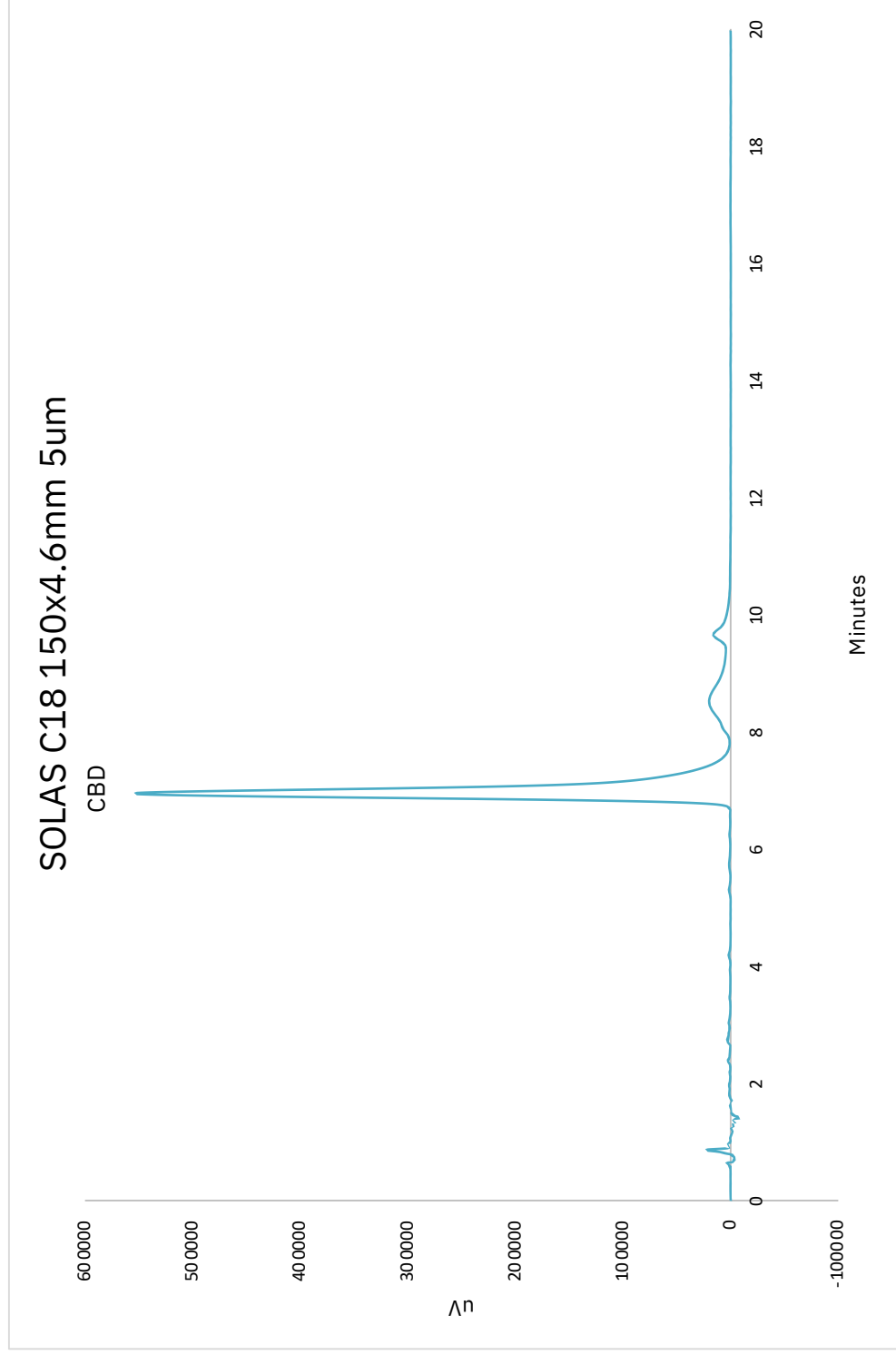
Mobile Phase: 75/25 Acetonitrile/Water; Flow rate:1.5mL/Minutes; Injection Volume:5.0uL; Standard Concentration: 100ug/mL; UV: 214nm & 280 nm;
Column Oven Temperature: 30°C



Hemp Products (CBD Tinctures)

Chromatographic conditions:

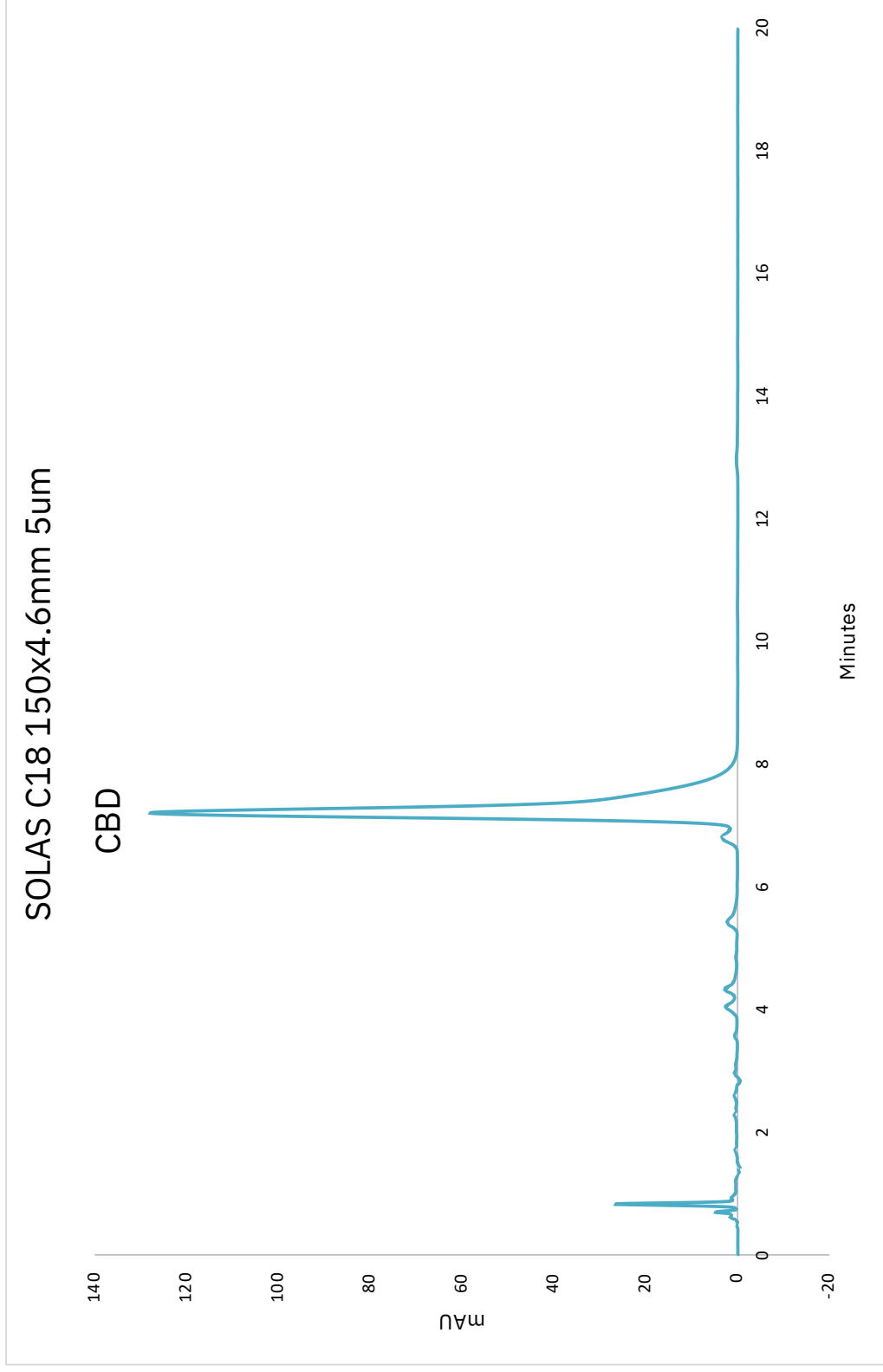
Mobile Phase: 75/25 Acetonitrile/Water; Flow rate:1.5mL/Minutes; Injection Volume:5.0uL; Standard Concentration: 100ug/mL; UV: 214nm; Column
Oven Temperature: 30°C



Hemp Products (Herbal Supplement)

Chromatographic conditions:

Mobile Phase: 75/25 Acetonitrile/Water; Flow rate:1.5mL/Minutes; Injection Volume:5.0uL; Standard Concentration: 100ug/mL; UV: 214nm; Column
Oven Temperature: Ambient



Hemp Products (Distillate)

Chromatographic conditions:

Mobile Phase: 75/25 Acetonitrile/Water; Flow rate:1.5mL/Minutes; Injection Volume:5.0uL; Standard Concentration: 100ug/mL; UV: 214nm; Column
Oven Temperature: Ambient

